



130.00 mm

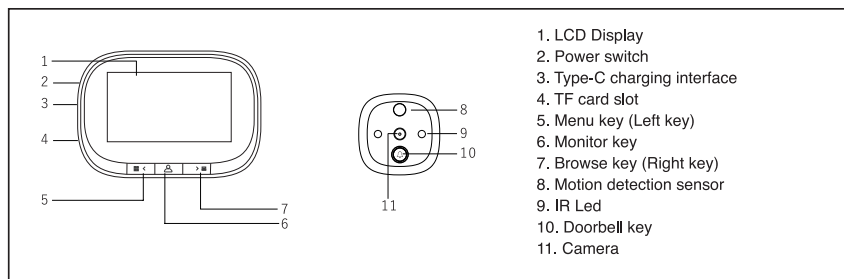
**KYLATE**

**VIEWGUARD**

**GB DIGITAL DOOR VIEWER**

9715462

Thanks for purchasing the digital door viewer produced by us, in order to help you to use the product in right way, please read this manual carefully before using it

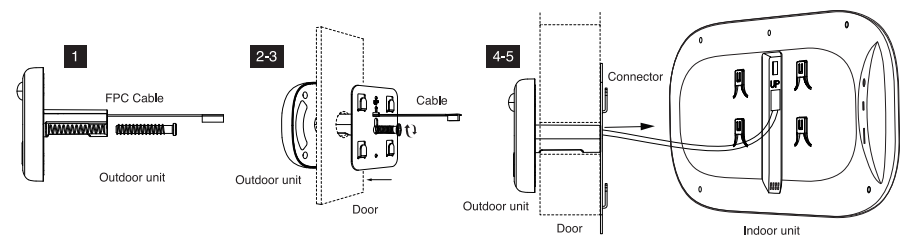


**INSTALL INSTRUCTION**

Step 1. According to the thickness of the door to select a suitable bolt, then, screw the bolt into the hole (refer installation icon 1)  
 Step 2. Tear off double-side adhesive protective film on the back of the outdoor part, insert the unit barrel together with the FPC cable through the peephole of the door, then stick the outdoor part on door (motion detection is upward, doorbell key is downward)  
 Step 3. Take out the metal bracket (the "UP" arrow on the bracket means upward), pass the FPC cable through the rectangular hole, the right screw through the round of the metal bracket, then, lock the metal bracket with the outdoor unit tightly.

01

Step 4. Connect the FPC cable from outdoor part to the connector of the indoor part (pay attention to the right direction)  
 Step 5. The four slots on the back of indoor part is aligned with four projection on metal bracket and buckle up, then pull down the outdoor part to lock tightly.  
 Step 6. Insert TF card to the indoor unit. Installation finished.



**CONFIGURACIÓN DEL MENÚ**

In the standby status after power on, press menu key for 3 seconds to enter the menu setup interface, then, press left or right key to select the item, press monitor key to confirm, press menu key for 3 seconds again to exit  
 Menu page include 11 menu setups  
 1. Language: There are 10 different languages to select.  
 2. Record Mode: Photo / Video. When select video, it will consume more power. 3. Motion Detection: On/Off. It will consume more

02

power when motion detection is on.  
 4. Screen Off Time: 15S/25S/35S/Off. When you select "Off", it can't be turn off automatically. 5. Ring On/Off: On/Off. The bell will not ring when you select "Off".  
 6. Ringing Type: 12 ringtone for selecting.  
 7. Ringing Volume: "High", "Medium", "Low" 3 levels for selecting. 8. Date Time: year/month/day/hour/minute/second can be set.  
 9. Format Disk: all record files can be deleted when you format the memory card. 10. Default Setting: Recover to factory setting.  
 10. Default Setting: Recover to factory setting.  
 11. Software Version: information for repairing reference.

**OPERATIONS**

1. Power on: Press the doorbell key or monitor key.  
 2. Power Off: Long press the monitor key for 3 seconds, or press the reset key, or it will turn off automatically 15S/25S/35S after it is turn on 3. Doorbell: When pressing the bell key, the indoor unit will display and ring, at the same time, it will make photo or video.  
 4. Record mode: Photo and video record mode can be selected in setting menu. Photo mode, when pressing bell key or monitor key it will take photos.  
 Video mode: when pressing bell key or monitor key it will make video. 5. Take photo/video: press doorbell key, or press monitor key in monitor status.  
 5. Take photo/video: press doorbell key, or press monitor key in monitor status.  
 6. Motion detection: Turn on this function, when something moving within (1-3M) distance from the product, it will turn on and make photo or video automatically.  
 7. Enter/exit setting manual: long press menu key (left key) for 3 seconds. 8. Enter record reviewing: long press browse key (right key) for 3 seconds.  
 8. Enter record reviewing: long press browse key (right key) for 3 seconds.

03

**PRODUCT SPECIFICATIONS**

Display screen	4.3 inch TFT
Image sensor	1MP
Viewing angle	Horizontal 120 ° (diagonal 170 °)
Record mode	Photo / Video
Doorbell ring	12 optional chords
Micro SD card	Support 1 to 32G
IR Led	2PCS
Motion detection	1-3M
Power supply	Rechargeable Battery
Door thickness	35-120mm
Menu language	English, Chinese
Product size	Indoor unit 146x97x20mm Outdoor unit 61.5x61.5x13.5mm

**STANDARD PACKAGE**

Outdoor device	1pc
Indoor device	1pc
Metal bracket	1pc
Screw	4pc
USB cable	1pc
User manual	1pc

04

**DECLARATION OF CONFORMITY**

This device complies with the Electromagnetic Compatibility (EMC) standards established by the European Directive 2014/30/EU and the Low Voltage Regulations (2014/35/EU). It complies with Directive 2011/65/EU on the restriction of the use of certain hazardous substances in electrical and electronic equipment and Directive 2009/125/EC on ecodesign requirements for energy-related products.

**WARRANTY**

The warranty period of this device is established according to the terms established by the legislation in force at the time of purchase, being covered the warranty terms established by the law in force in each country.  
 For the guarantee to be effective, present the purchase invoice at the time of the request.  
 During the warranty period, any defect in the appliance attributable to both materials and manufacturing will be remedied, either by repairing, replacing parts, or providing a new appliance at our discretion.  
 This warranty is not valid for defects caused as a result of: Misuse, abuse or neglect. Professional or repair attempt by unauthorized personnel. Normal wear and tear due to use causing defects or a decrease in the value or operation of the product. Damage caused by external accessories and objects, substances or accidents.  
 In case of warranty claim, go to the point of sale where you purchased the product. Neopro, Servicios Integrales de ferreteria, S.L. declines all responsibility in case of accident due to improper use of the device or failure to comply with the instructions for use and maintenance.

Importado por:  
 NEOPRO Servu.Int.Frta., S.L. B10898260  
 Rosalind Franklin, 30. 28906 - Getafe, Madrid  
 FABRICADO EN CHINA



05

468.00 mm